

LED SHEET



IP20	24Vdc	3 YRS Warranty	26 W/pc
Upon request			
1-10V	DMX PWM	RF PWM	MLV

PHYSICAL

Mounting Non-Porous	3M double sided Tape
Board Type/Color	2oz Density, White PCB
Cutable Segments	60x4167mm
Dimension	500x240mm

OPTICAL

CRI	>80
Beam Angle	120°
LED Density	288LEDs/pc

ELECTRICAL

Light source	LED
Color Temp.	2700K, 3000K, 4000K, 5000K, 6500K
Power Consumption	26W/pc
Driver	24Vdc
Dimming	Dmx PWM, RF PWM, 0-10V, MLV Incandescent
Ambient Temp.	-25°C ~ +60°C
Luminous Flux maintenance	50,000 h

Range	Light efficiency (lm/W)	CCT//WL	Luminous flux (lm/pc)
LED SHEET 1	100lm/W	2700K	2600lm/pc
LED SHEET 2	105lm/W	3000K	2730lm/pc
LED SHEET 3	110lm/W	4000K	2860lm/pc
LED SHEET 4	113lm/W	5000K	2940lm/pc
LED SHEET 5	116lm/W	6500K	3016lm/pc

This LED sheet functions as a backlight system with low energy consumption and a high Lumen output. It offers flexibility for various applications by allowing customization of module length, horizontal and vertical module spacing, and module direction for both single and double-sided use. This lighting solution is suitable for illuminating graphics from behind and is particularly effective for large-sized and curved lighting boxes.

Product Features:

- Ultra-thin flexible LED sheet
- Cutable matrix at 6 LEDs per segment
- Constant Voltage 24V DC input

ORDERING CODE

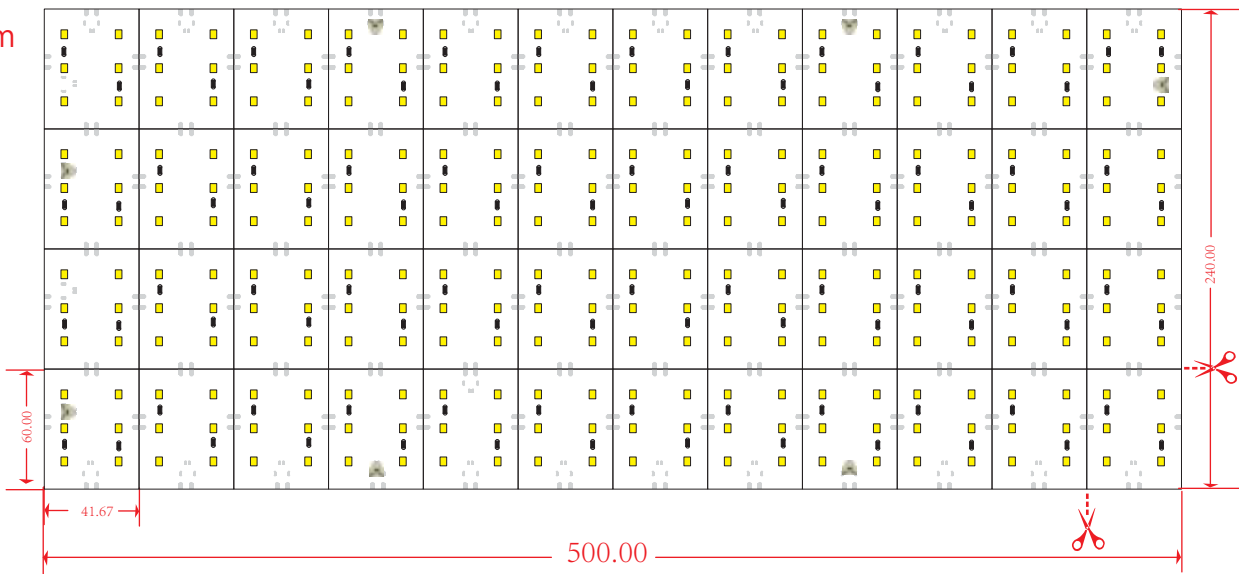
SERIES NAME - PRODUCT RANGE - CCT - CONTROL

LED SHEET	1	27 2700K	1 ON-OFF
	2	30 3000K	2 0-10V
	3	40 4000K	3 DMX PWM
	4	50 5000K	4 RF PWM
	5	65 6500K	5 MLV INCANDESCENT



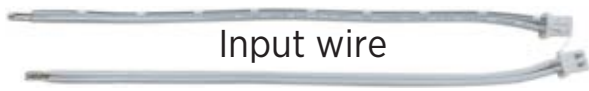
Dimensions

Unit: mm



Notes:

1. Shown as diagram above. Every single LED can be cut vertically and horizontally.
2. For installation convenience, one type of wire is provided. When it is going to be connected with power, the only way to read the sign on the board where it shows positive and negative not the color of the wires. Negative and positive is shown as the diagram above. White wire is for positive. Gray wire is for negative. The LED will turn on if it is right. Otherwise repeat with notice. Or Check with the Connection Diagram.



Installation

3M super-thin adhesive tape on the back or screw-fixed.

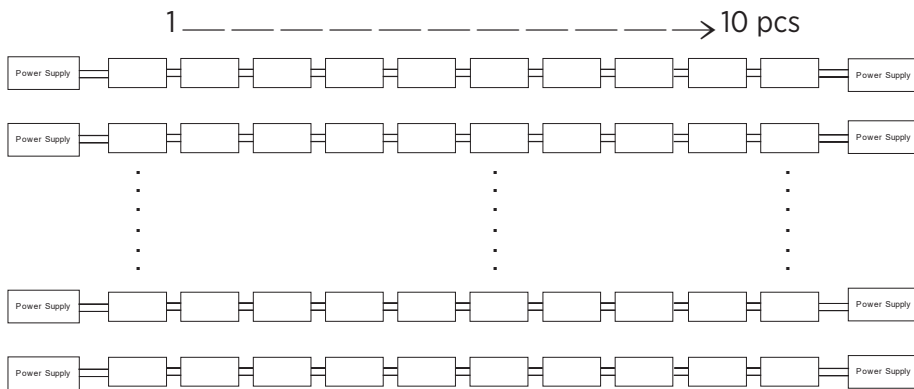


Connection guide

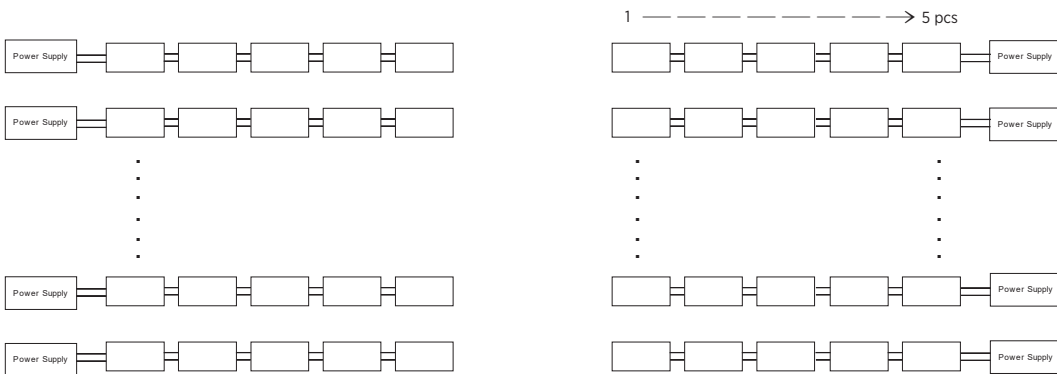
Determine your system components, including a 24V class 2 power adapter, as well as optional dimmer.

Wiring With Power Adapters:

Use a adapter to connect the LED sheet to your power source.



Double side power supply

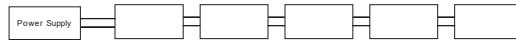


Single side power supply

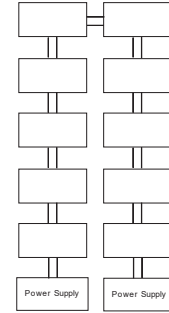
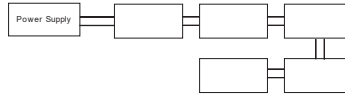
Cable UL 20AWG Max C= 5A
Max cascading series connection 5PCS

Connection guide

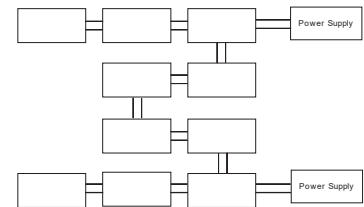
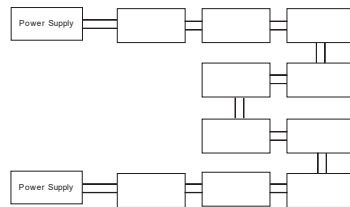
1. Straight connection



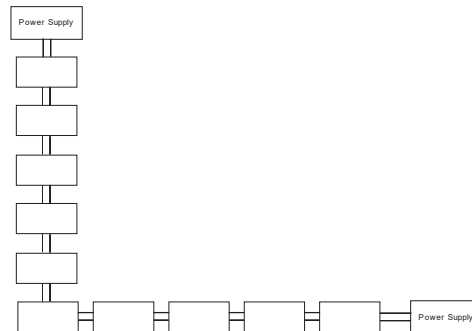
2. N connection



3. M connection



4. L connection



Cable UL 20AWG Max C= 5A
Max cascading series connection 5PCS