

**CACTUS SERIES**

# CACTUS SERIES



IP20	220-240V	5 YRS Warranty	4-37 WATTS
------	----------	-------------------	---------------

Upon request

1-10V	DALI
-------	------

## PHYSICAL

Body	Aluminum
Finish	Powder coated White 9016, Black 9005

## OPTICAL

Diffuser	Polycarbonate
Light Emission	Direct
Beam Angle	15°, 36°

## ELECTRICAL

Light source	LED
CRI	>90
CCT	2700K - 3000K - 4000K
Driver	Electronic included   50-60Hz 220-240VAC Non-Dimmable Driver 1-10V dimming or DALI on request
Ambient Temp.	-20°C ~ 45°C

**CACTUS SERIES** consists of a linear recessed downlight that offers two beam options: a Symmetric Beam (referred to as CACTUS SYM) and an Asymmetric Beam (referred to as CACTUS ASS). This lighting fixture features an aluminum die-casting frame with a UV-resistant white powder coating finish, ensuring efficient thermal control. It utilizes a CREE XP-G high-power SMD light source, delivering impressive brightness, CRI, and minimal color deviation. The design incorporates modular lenses and multi-louver reflectors to reduce glare, achieving a UGR<19 and creating a unique and visually pleasing light distribution.



CACTUS SYM 1.1



CACTUS SYM 1.2



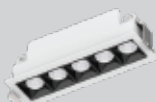
CACTUS SYM 1.3



CACTUS SYM 1.4



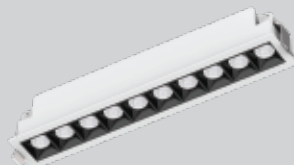
CACTUS SYM 1.5



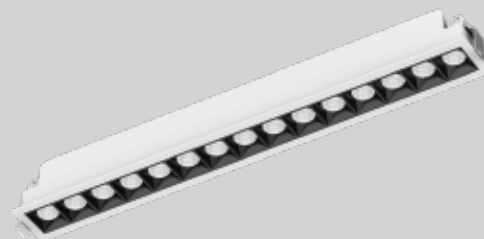
CACTUS SYM 1.6



CACTUS SYM 1.7



CACTUS SYM 1.8



PRODUCT RANGE

	Rated Power(W)	Dimensions(mm)	Cut out dimensions(mm)	Lumen output (lm)
<b>CACTUS SYM 1.1</b>	4W	L45 W45 H42	L37 W37	190lm
<b>CACTUS SYM 1.2</b>	6W	L76 W45 H51	L68 W37	370lm
<b>CACTUS SYM 1.3</b>	9W	L105 W45 H51	L97 W37	600lm
<b>CACTUS SYM 1.4</b>	11W	L75 W75 H51	L67 W67	710lm
<b>CACTUS SYM 1.5</b>	13W	L147 W45 H51	L139 W37	940lm
<b>CACTUS SYM 1.6</b>	23W	L105 W105 H51	L97 W97	1760lm
<b>CACTUS SYM 1.7</b>	25W	L280 W45 H51	L272 W37	1820lm
<b>CACTUS SYM 1.8</b>	37W	L413 W45 H51	L405 W37	2830lm

## ORDERING CODE

SERIES NAME - PRODUCT RANGE - CCT - OPTICS - CONTROL

CACTUS SYM

I.1  
I.2  
I.3  
I.4  
I.5  
I.6  
I.7  
I.8

27 2700K 15 15°  
30 3000K 36 36°  
40 4000K

1 ON-OFF  
2 1-10V  
3 DALI

**SYMMETRIC**



**ASSYMETRIC**

# CACTUS ASSYMETRIC SERIES



IP20	220-240V	5 YRS Warranty	9-37 WATTS
------	----------	-------------------	---------------

Upon request

1-10V	DALI
-------	------

## PHYSICAL

Body	Die cast Aluminum
Finish	Powder coated White 9016, Black 9005

## OPTICAL

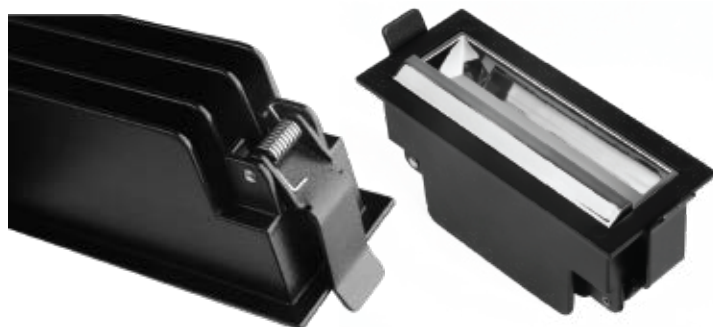
Diffuser	Polycarbonate
Beam angle	70°x90°x10°

## ELECTRICAL

Light source	LED
CRI	>90
CCT	2700K - 3000K - 4000K
Driver	Electronic included   50-60Hz 220-240VAC Non-Dimmable Driver 1-10V dimming or DALI on request
Ambient Temp.	-20°C ~ 45°C

**CACTUS SERIES** consists of a linear recessed downlight that offers two beam options: a Symmetric Beam (referred to as CACTUS SYM) and an Asymmetric Beam (referred to as CACTUS ASS). This lighting fixture features an aluminum die-casting frame with a UV-resistant white powder coating finish, ensuring efficient thermal control. It utilizes a CREE XP-G high-power SMD light source, delivering impressive brightness, CRI, and minimal color deviation. The design incorporates modular lenses and multi-louver reflectors to reduce glare, achieving a UGR<19 and creating a unique and visually pleasing light distribution.

Series	Rated Power (W)	Dimensions (mm)	Cut-out Dimensions (mm)	Lumen output (lm)
CACTUS ASS 1.1	9W	L105 W45 H55	L97 W37	380lm
CACTUS ASS 1.2	13W	L147 W45 H55	L139 W37	690lm
CACTUS ASS 1.3	25W	L280 W45 H55	L272 W37	1300lm
CACTUS ASS 1.4	37W	L413 W45 H55	L405 W37	2000lm



## ORDERING CODE

SERIES NAME - PRODUCT RANGE - CCT - CONTROL

CACTUS	1.1	30 3000K	1 ON-OFF
ASSYMETRIC	1.2	40 4000K	2 1-10V
	1.3	60 6000K	3 DALI
	1.4		