

# LED SHEET



IP20	24Vdc	26 W/pc	3YRS Warranty
DMX PWM	RF PWM	MLV	0-10V

## PHYSICAL

Mounting Non-Porous	3M double sided Tape
Board Type/Color	2oz Density, White PCB
Cuttible Segments	60x41.67mm
Dimension	500x240mm

## OPTICAL

CRI	>80
Beam Angle	120°
LED Density	288LEDs/pc

## ELECTRICAL

Lamp	LED
Color Temp.	2700K, 3000K, 4000K, 5000K, 6500K
Power Consumption	26W/pc
Gear	24Vdc
Dimming	Dmx PWM, RF PWM, 0-10V, MLV Incandescent
Ambient Temp.	-25°C ~ +60°C
Luminous Flux maintenance	50,000 h

This **LED sheet** functions as a backlight system with low energy consumption and a high Lumen output. It offers flexibility for various applications by allowing customization of module length, horizontal and vertical module spacing, and module direction for both single and double-sided use. This lighting solution is suitable for illuminating graphics from behind and is particularly effective for large-sized and curved lighting boxes.

### Product Features:

- +Ultra-thin flexible LED sheet
- +Cuttible matrix at 6 LEDs per segment
- +Constant Voltage 24V DC input

Series	Light Efficiency (lm/W)	OCT//WL	Luminous Flux (lm/pc)
LED SHEET 1	100	2700K	2600
LED SHEET 2	105	3000K	2730
LED SHEET 3	110	4000K	2860
LED SHEET 4	113	5000K	2940
LED SHEET 5	116	6500K	3016

## ORDERING CODE

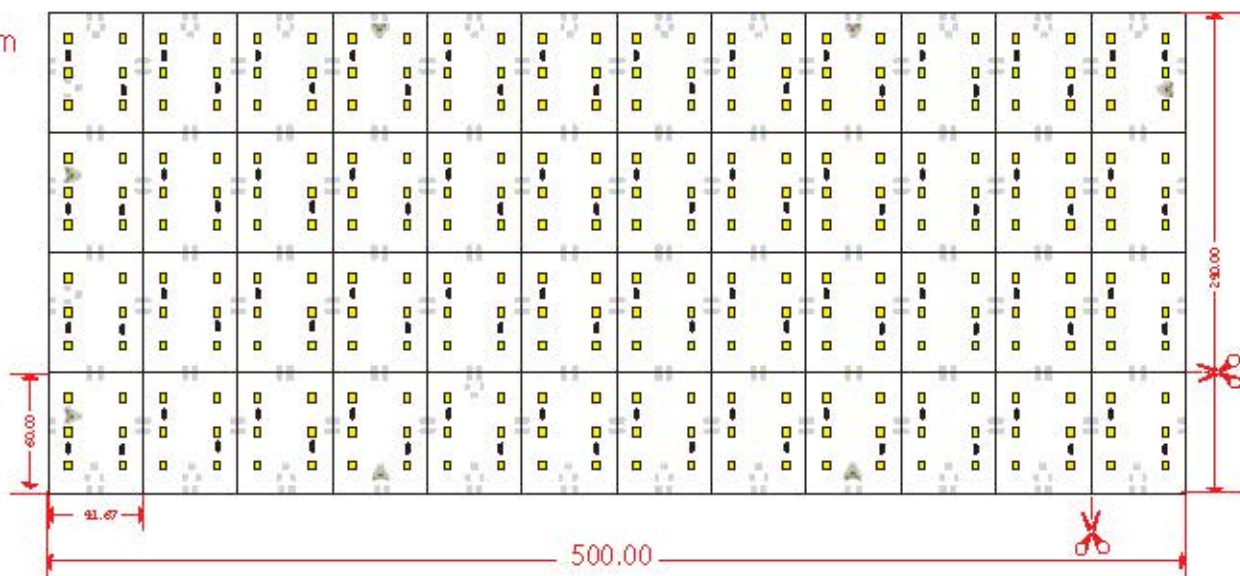
### SERIES NAME - PRODUCT RANGE - CCT - CONTROL

LED SHEET	1	27 2700K	1 ON-OFF
	2	30 3000K	2 0-10V
	3	40 4000K	3 DMX PWM
	4	50 5000K	4 RF PWM
	5	65 6500K	5 MLV INCANDESCENT



# Dimensions

Unit: mm



Notes:

1. Shown as diagram above. Every single LED can be cut vertically and horizontally.
2. For installation convenience, one type of wire is provided. When it is going to be connected with power, the only way to read the sign on the board where it shows positive and negative not the color of the wires. Negative and positive is shown as the diagram above. White wire is for positive. Gray wire is for negative. The LED will turn on if it is right. Otherwise repeat with notice. Or Check with the Connection Diagram.



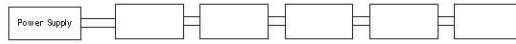
# Installation

3M super-thin adhesive tape on the back or screw-fixed.

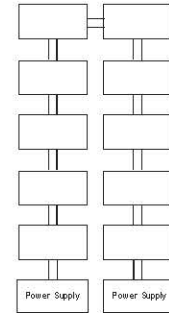
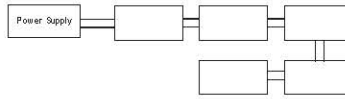


# Connection guide

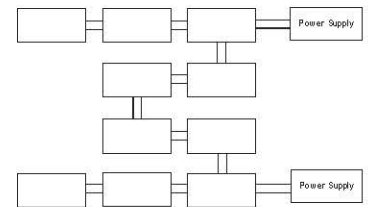
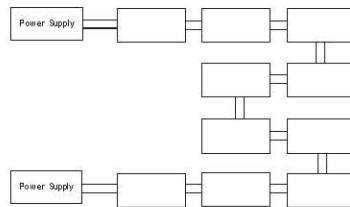
## 1. Straight connection



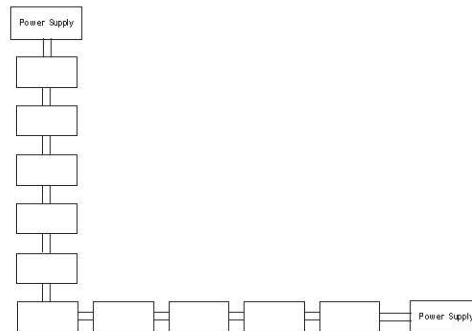
## 2. N connection



## 3. M connection



## 4. L connection



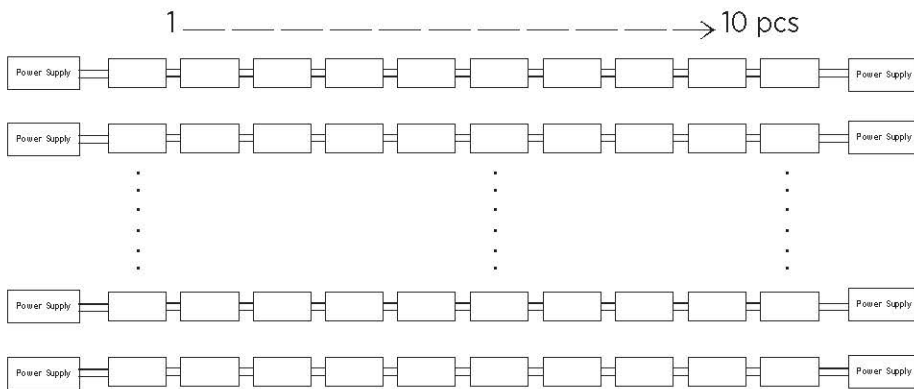
Cable UL 20AWG Max C= 5A  
Max cascading series connection 5PCS

# Connection guide

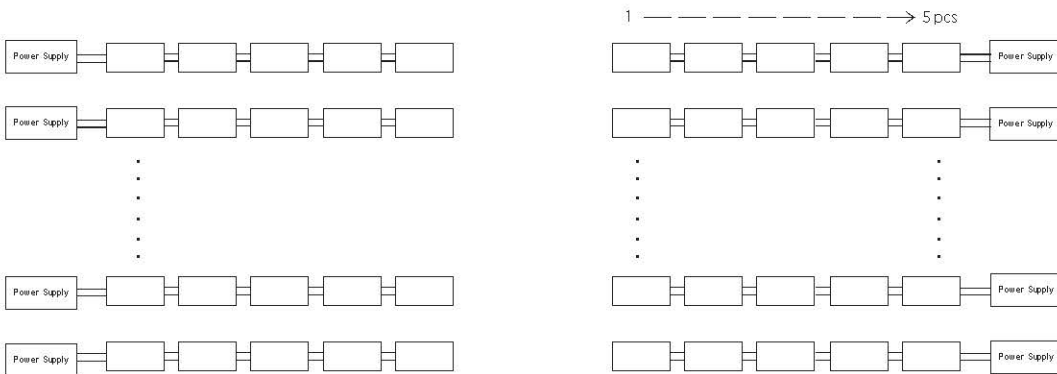
Determine your system components, including a 24V class 2 power adapter, as well as optional dimmer.

Wiring With Power Adapters:

Use an adapter to connect the LED sheet to your power source.



Double side power supply



Single side power supply

Cable UL 20AWG Max C= 5A  
Max cascading series connection 5PCS

## What is exterior or façade lighting, and what purpose does it serve?

Illuminating the exteriors of our buildings is integral to establishing visually appealing urban landscapes. In the contemporary setting, buildings are expected to be iconic landmarks, making a distinctive impression during both day and night. Meticulously crafted nighttime illumination on the façades, which respects the building's architecture and context while managing light spill, is crucial in creating an image that is appreciated by everyone.

Façade lighting can be categorized into two types:

- Direct lighting
- Indirect lighting

## What factors need thorough evaluation?

- Choice between direct or indirect lighting.
- Resistance to weather conditions.
- Distribution of light.
- Seamless integration into façade details and considerations for maintenance.

